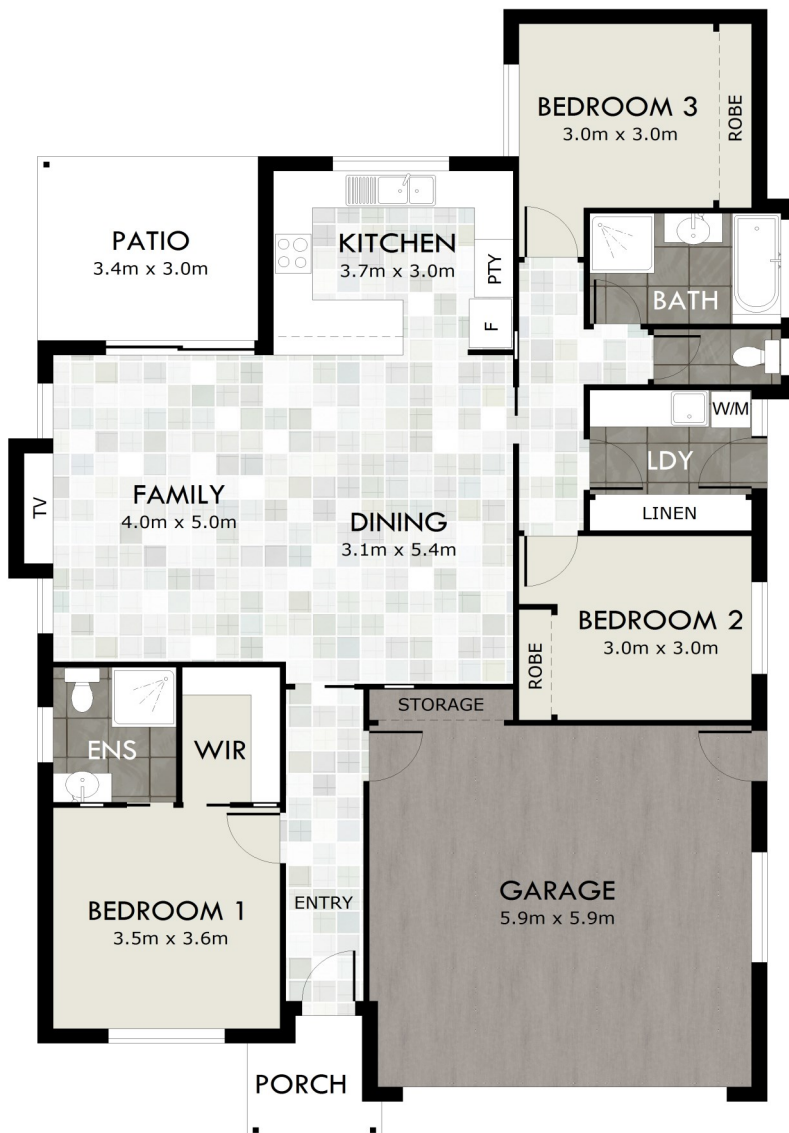








THE Selkirk 20

AFFORDABLE AND PRACTICAL

A combination of family living and style. The continuous flow from the entry foyer to the large living areas creates a unique sense of space and practicality. Featuring 3 bedrooms the Selkirk is an affordable and practical home for the growing family or first home buyer.



Lifestyle **SNAPSHOT**

-  3
-  2
-  2
-  20 Imp. Sq.